

# Product data sheet

Specifications

SQUARE D

Green Premium™



Safety switch, heavy duty, fusible, 30A, 4 wire, 3 poles, 1 neutral, 7.5hp, 240VAC/250VDC, Type 3R, bolt on hub provision

H321NRB

Product availability : Stock - Normally stocked in distribution facility

Price\* : 555.00 USD

## Main

|                            |  |
|----------------------------|--|
| Product                    | Single Throw Safety Switch   |
| Duty Rating                | Heavy duty   |
| Device Application         | Heavy application  |
| Disconnect Type            | Fusible disconnect   |
| Factory Installed Neutral  | Neutral (factory installed)  |
| Phase                      | 3 phase  |
| Number of Poles            | 3  |
| Current Rating             | 30 A   |
| Voltage Rating             | 250 V DC<br>240 V AC   |
| Enclosure Rating           | NEMA 3R galvanized steel   |
| Maximum Horse Power Rating | 1.5 hp 240 V at AC 50-60 Hz for 1 phase conforming to NEC 240.6<br>3 hp 240 V at AC 50-60 Hz for 3 phase conforming to NEC 240.6<br>3 hp 240 V at AC 50-60 Hz for 1 phase conforming to NEC 430.52<br>7.5 hp 240 V at AC 50-60 Hz for 3 phase conforming to NEC 430.52<br>5 hp 250 V at DC |

## Complementary

|                              |  |
|------------------------------|--|
| Short Circuit Current Rating | 10 kA H or K<br>200 kA R or J  |
| Fuse type                    | H or K<br>R or J   |
| Mounting Type                | Surface  |
| Electrical Connection        | Lugs   |
| Wiring configuration         | 4-wire (3PH + G)   |
| Wire Size                    | AWG 12...AWG 6 aluminium<br>AWG 14...AWG 6 copper  |
| Tightening torque            | 45 lbf.in (5.08 N.m) 0.02 in² (13.3 mm²) (AWG 6)<br>40 lbf.in (4.52 N.m) 0.01 in² (8.367 mm²) (AWG 8)<br>35 lbf.in (3.95 N.m) 0.00...0.01 in² (2.06...5.261 mm²) (AWG 14...AWG 10) |
| Depth                        | 4.88 in (123.95 mm)  |
| Width                        | 6.63 in (168.40 mm)  |
| Height                       | 14.88 in (377.95 mm)   |

\* Price is “List Price” and may be subject to a trade discount – check with your local distributor or retailer for actual price.

|            |                       |
|------------|-----------------------|
| Net Weight | 9.55 lb(US) (4.33 kg) |
|------------|-----------------------|

## Environment

|                |                      |
|----------------|----------------------|
| Certifications | UL listed file E2875 |
|----------------|----------------------|

## Ordering and shipping details

|                       |                                |
|-----------------------|--------------------------------|
| Category              | 00009-H&HU SW,2&3P,N3R,30-200A |
| Discount Schedule     | DE1                            |
| GTIN                  | 785901480068                   |
| Nbr. of units in pkg. | 1                              |
| Package weight(Lbs)   | 8.57 lb(US) (3.887 kg)         |
| Returnability         | Yes                            |
| Country of origin     | US                             |

## Packing Units

|                              |                            |
|------------------------------|----------------------------|
| Unit Type of Package 1       | PCE                        |
| Package 1 Height             | 5.20 in (13.208 cm)        |
| Package 1 width              | 7.70 in (19.558 cm)        |
| Package 1 Length             | 16.20 in (41.148 cm)       |
| Unit Type of Package 2       | PAL                        |
| Number of Units in Package 2 | 105                        |
| Package 2 Weight             | 900.00 lb(US) (408.233 kg) |
| Package 2 Height             | 40.00 in (101.6 cm)        |
| Package 2 width              | 40.00 in (101.6 cm)        |
| Package 2 Length             | 48.00 in (121.92 cm)       |

## Offer Sustainability

|                            |   |
|----------------------------|---|
| Sustainable offer status   | Green Premium product   |
| California proposition 65  | WARNING: This product can expose you to chemicals including: Lead and lead compounds, which is known to the State of California to cause cancer and birth defects or other reproductive harm. For more information go to <a href="http://www.P65Warnings.ca.gov">www.P65Warnings.ca.gov</a> |
| REACH Regulation           | <a href="#">REACH Declaration</a>   |
| REACH free of SVHC         | Yes   |
| EU RoHS Directive          | Compliant<br><a href="#">EU RoHS Declaration</a>  |
| Mercury free               | Yes   |
| RoHS exemption information | <a href="#">Yes</a>   |
| China RoHS Regulation      | <a href="#">China RoHS declaration</a><br>Product out of China RoHS scope. Substance declaration for your information.  |
| Environmental Disclosure   | <a href="#">Product Environmental Profile</a>   |
| PVC free                   | Yes   |

## Contractual warranty

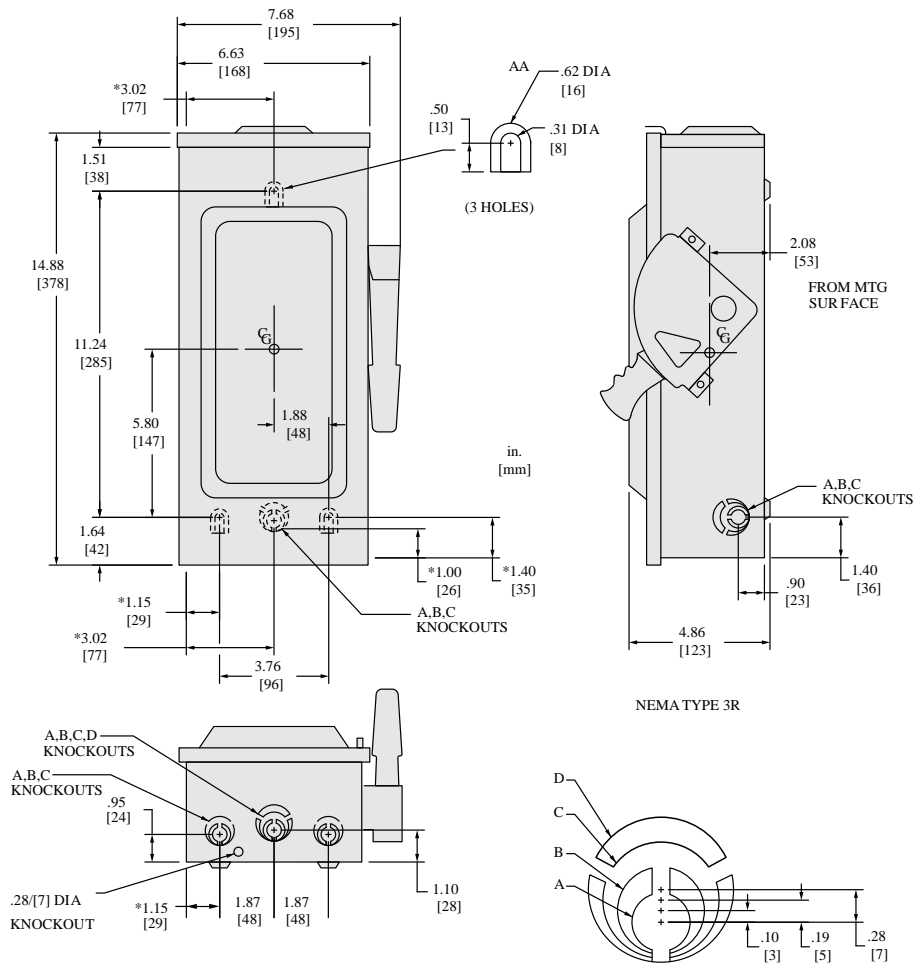
|          |           |
|----------|-----------|
| Warranty | 18 months |
|----------|-----------|

Product data sheet

H321NRB

Technical Illustration

Dimensions

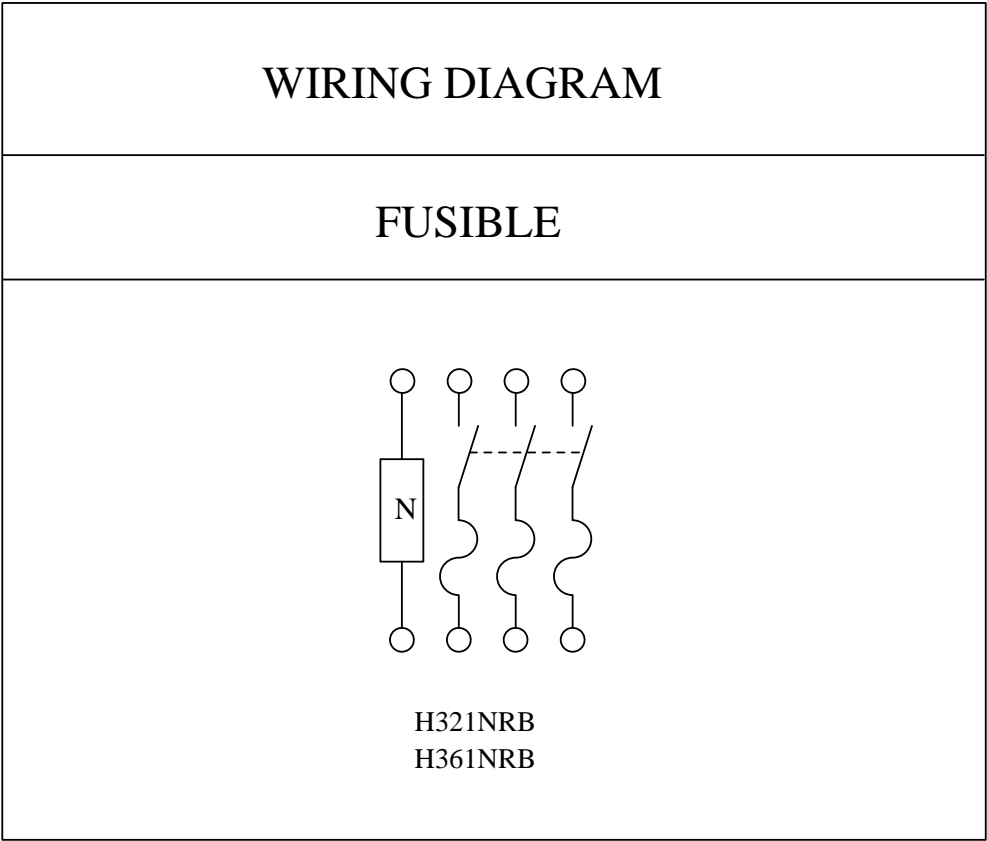


| KNOCKOUTS |              |    |          |    |
|-----------|--------------|----|----------|----|
| SYMBOL    | CONDUIT SIZE |    | DIAMETER |    |
|           | IN           | MM | IN       | MM |
| A         | .50          | 13 | .88      | 22 |
| B         | .75          | 19 | 1.13     | 29 |
| C         | 1.00         | 25 | 1.38     | 35 |
| D         | 1.25         | 32 | 1.75     | 44 |

TANGENT KNOCKOUT  
(DIMENSION ON DRAWING TO CENTERLINE OF "A" KNOCKOUT)

\*DIMENSIONS TO BOX (NOT COVER)  
ALL DIMENSIONS ARE APPROXIMATE.  
REFER TO TECHNICAL DRAWINGS AND DOCUMENTATION FOR COMPLETE INFORMATION.

Wiring Diagram



| TERMINAL LUGS |          |          |          |
|---------------|----------|----------|----------|
| AMPERES       | MAX WIRE | MIN WIRE | TYPE     |
| 30            | #6 AWG   | #14 AWG  | AL OR CU |

Technical Drawing 2229S, Wiring Diagram B